

Common Herbarium Pests & Visitors



DANGER! High Risk



Please notify herbarium staff if you see any of the following:



Antennae

UF

Drugstore Beetle (*Stegobium paniceum*)

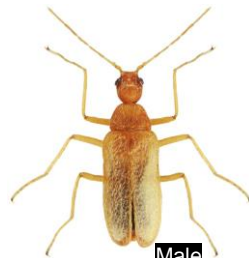
Similar to cigarette beetle but appears relatively less stout and has deep pitted lines on elytra. Antennae with three elongated segments at end.

2 – 3 mm long.

Odd Beetle (*Thylodrias contractus*)

Larva: Dense tuft of hairs, often curls into a ball.
Adult (Female): Larviform, wingless. Larger than male.
Adult (Male): Elytra do not close all the way, revealing abdomen.

EXTREME CONCERN: Larvae are long lived (242-388 days) and may undergo retrogressive molting in stressful situations.



Male



Female



Larva

Cigarette Beetle (*Lasioderma serricorne*)

Head can't be seen from above. Small, stout. Covered with tiny hairs but appears shiny overall. Saw-like antennae. 2 – 3 mm long.

Larvae are white with a tan head and may curl into a C-shape.

EXTREME CONCERN:
History of damage by cigarette beetles at NY in Clusiaceae and Salicaceae



Larva



Pupa



Adult



Damage by and frass of cigarette beetles

Carpet Beetles

(Family Dermestidae)
Elongated larvae, often with long tufts of hairs.
Adults 2-6 mm long depending on species, varies in color. Black to multicolored.



Adult



Adult



Larva



Larva

Moderate Risk

Spider Beetle

(*Gibbium aequinoctiale*)

Shiny, hump-shaped elytra. Reddish-brown.

1.5 – 3.5 mm long.

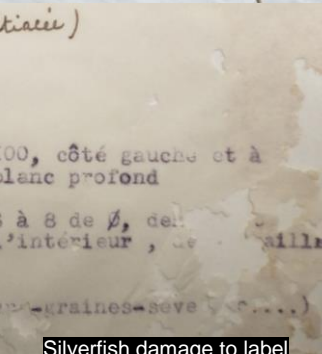


Silverfish

(*Lapisma saccharina*)

Long, flattened, silver bodies with three prongs at end. Nymphs look the same as adults, but smaller.

Up to 15 mm long.



Silverfish damage to label

Low Risk

Dienerella sp.

Deep pits all over body. Very small, (1 – 2 mm). Thorax and head noticeably thinner than abdomen from above.



Booklice (Psocids)

Soft-bodied, conspicuous chewing mouth parts. Commonly wingless, though may be seen with wings (barklice).

1 – 2 mm long.

Red Mites (Arachnids)

May appear near-opaque light red/brown to dark red/brown.

8 legs. 0.5 to 1 mm long.



House centipede (*Scutigera coleoptrata*)

Body size ~ 1 inch long but may appear 3 – 4 inches including antennae and legs.

Body tannish-yellow with longitudinal, dark stripes. Legs banded.

Predator to other pests

For more information visit
museumpests.net

NEW YORK BOTANICAL GARDEN